

DIP Type

SMD Type

ZTT□E

ZTT□Y

Low Profile

Low Cost

SMD Type

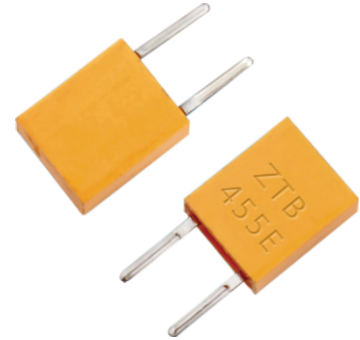
DIP Type

Frequency Range

190KHz~1250KHz

## Features

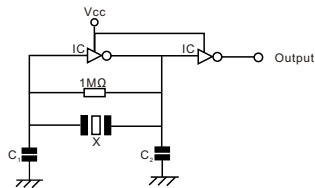
- Highly reliable design with excellent environmental resistance
- DIP package(ZTA□E series) or SMD package (ZTA□Y series)
- Frequency range from 190KHz to 1250KHz
- Standardized for use in low profile devices
- RoHS Compliant
- Low cost
- Can replace Murata CSB series ceramic resonators
- Applications: Car accessories, UPS, Power supply, PDAs, PC peripherals, Remote control system, Security, Alarm, etc.



## Standard Specifications

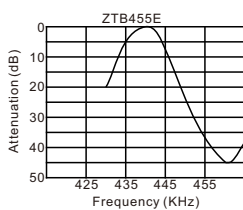
Part Number		Frequency Accuracy (at 25°C)	Resonator Impedance	Frequency Stability	Aging for Ten Years	Load Capacitance C <sub>1</sub> (pF)	Load Capacitance C <sub>2</sub> (pF)
DIP Type	SMD Type						
ZTB190-249E		±1KHz	≤20	±0.3%	±0.3%	330	470
ZTB250-374E		±1KHz	≤20	±0.3%	±0.3%	220	470
ZTB375-429E	ZTB375-429Y	±1KHz	≤20	±0.3%	±0.3%	120	470
ZTB430-509E	ZTB430-509Y	±2KHz	≤20	±0.3%	±0.3%	100	100
ZTB510-699E	ZTB510-699Y	±2KHz	≤20	±0.3%	±0.3%	100	100
ZTB700-1250E	ZTB700-1250Y	±0.5%	≤70	±0.3%	±0.3%	100	100

### Test Circuit

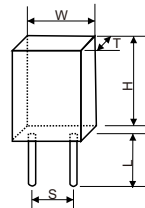


IC: 1/6CD4069UBE×2  
X: Ceramic Resonator  
C<sub>1</sub>, C<sub>2</sub>: Load Capacitance  
Vcc: +5V

### Characteristics



### DIP Type Dimensions



Frequency Range (KHz)	Width W (mm)	Thickness T (mm)	Height H (mm)	Lead Space S (mm)	Lead Length L (mm)
190~249	13.5	3.8	14.7	10.0	8.0
250~374	11.0	3.8	12.2	10.0	1.0
375~400	7.9	3.6	9.3	7.7	7.0
401~699	7.0	3.5	9.0	5.0	4.0 (6.0)
700~1250	5.2	2.8	6.8	2.5	3.5

## Dimensions SMD Type [Unit: mm]

