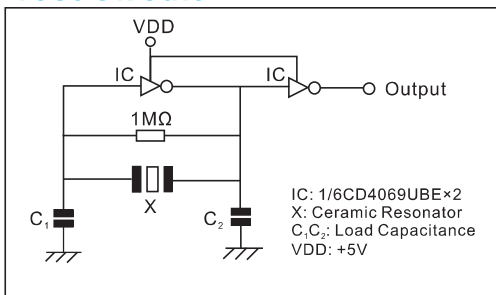


### Electrical Characteristics

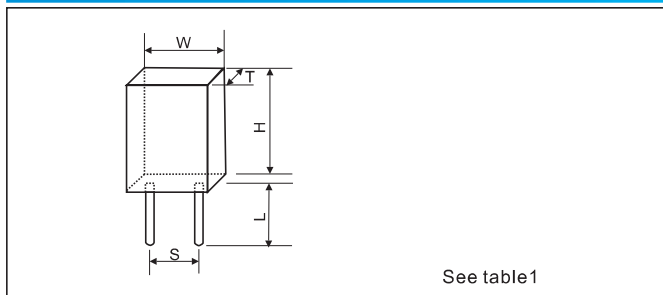
Part Number		Frequency Accuracy (at 25°C)	Resonator Impedance	Frequency Stability	Aging for ten years	Load Capacitance C <sub>1</sub> (pF)	Load Capacitance C <sub>2</sub> (pF)
DIP Type	SMD Type						
ZTB190-249E		±1KHz	≤20	±0.3%	±0.3%	330	470
ZTB250-374E		±1KHz	≤20	±0.3%	±0.3%	220	470
ZTB375-429E	ZTB375-429Y	±1KHz	≤20	±0.3%	±0.3%	120	470
ZTB430-509E	ZTB430-509Y	±2KHz	≤20	±0.3%	±0.3%	100	100
ZTB510-699E	ZTB510-699Y	±2KHz	≤20	±0.3%	±0.3%	100	100
ZTB700-1250E	ZTB700-1250Y	±0.5%	≤70	±0.3%	±0.3%	100	100

### Test Circuit

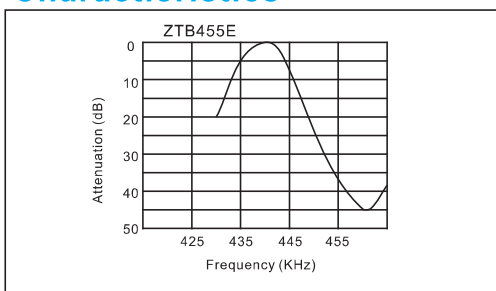


### Dimensions

Units:mm



### Characteristics



### Table 1

Frequency Range (KHz)	Width W (mm)	Thickness T (mm)	Height H (mm)	Lead Space S (mm)	Lead Length L (mm)
190-249	13.5	3.8	14.7	10.0	8.0
250-374	11.0	3.8	12.2	10.0	7.0
375-400	7.9	3.6	9.3	7.7	7.0
401-699	7.0	3.5	9.0	5.0	4.0(6.0)
700-1250	5.2	2.8	6.8	2.5	3.5

### Dimensions

Units:mm

